

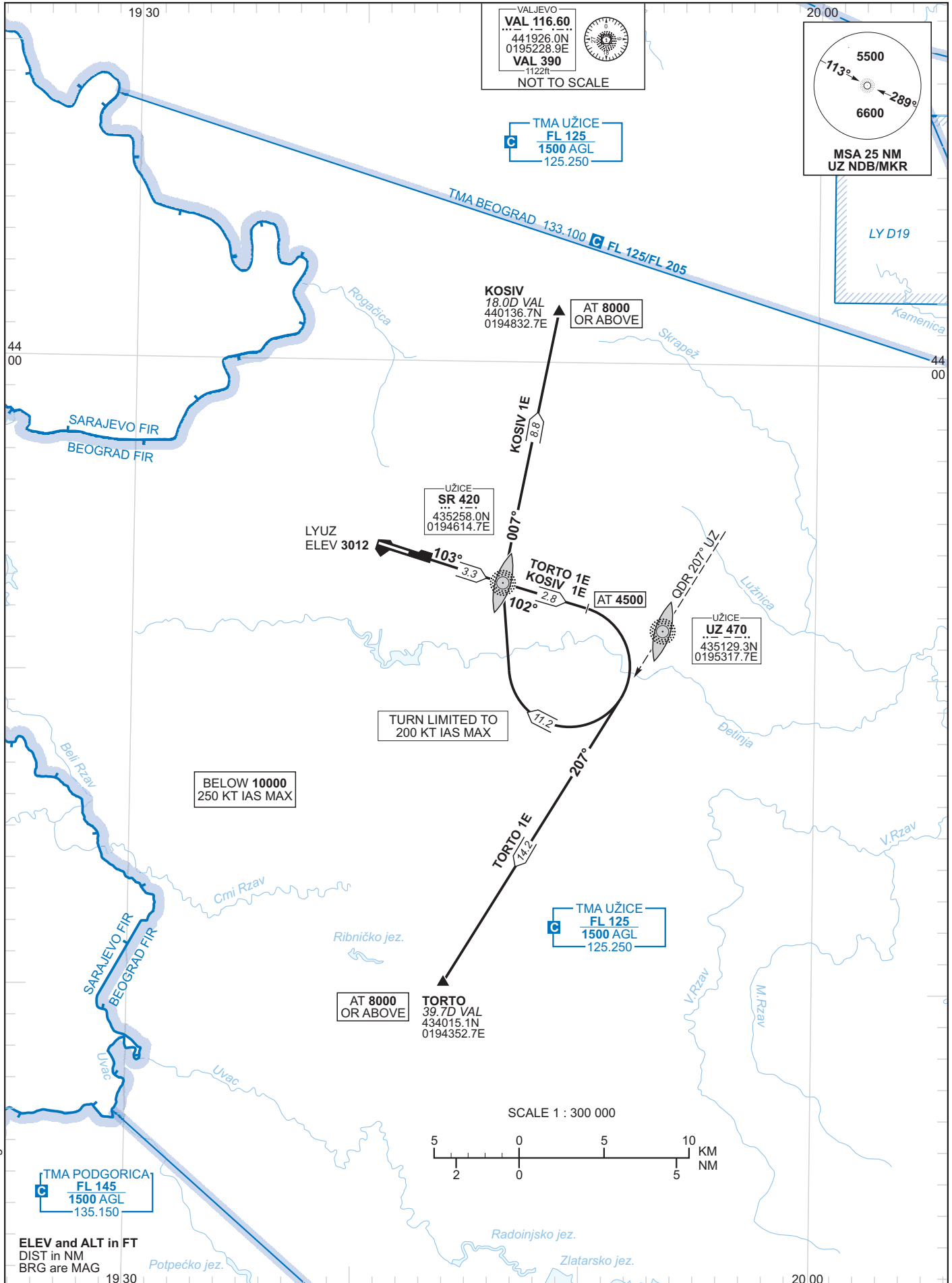
STANDARD DEPARTURE CHART
INSTRUMENT (SID) – ICAO

VAR 4° E (2015)

TRANSITION
ALTITUDE 10000

APP 125.250

UŽICE/
Ponikve
RWY 10



Change: TMA BEOGRAD - Lateral limits.

RWY 10 DEPARTURES

<i>SID designator</i>	<i>Lateral</i>	<i>Vertical</i>
KOSIV 1E (KOSIV ONE ECHO)	Climb straight ahead. At SR L intercept and follow SR QDR 102° to UZ NDB. At 4500FT turn RIGHT (200 KT IAS MAX) inbound SR L. At SR L intercept and follow SR QDR 007° climbing to KOSIV.	This SID requires PDG 4.1% until 4500FT. SR L at 3800FT. KOSIV at 8000FT or above.
TORTO 1E (TORTO ONE ECHO)	Climb straight ahead. At SR L intercept and follow SR QDR 102° to UZ NDB. At 4500FT turn RIGHT (200 KT IAS MAX) intercept and follow UZ QDR 207° climbing to TORTO.	This SID requires PDG 4.1% until 8000FT. SR L at 3800FT. TORTO at 8000FT or above.