

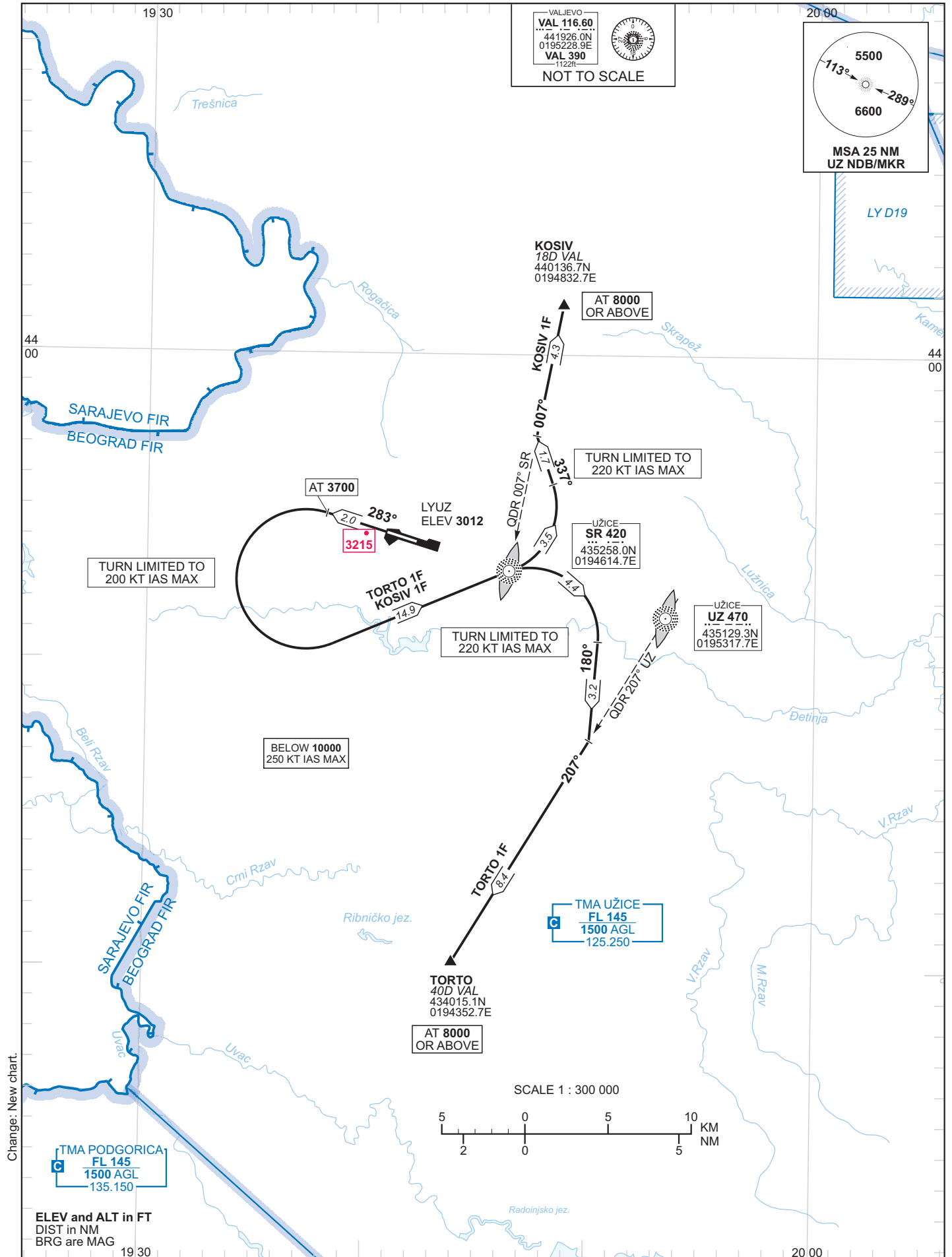
STANDARD DEPARTURE CHART
INSTRUMENT (SID) – ICAO

VAR 4° E (2015)

TRANSITION
ALTITUDE 10000

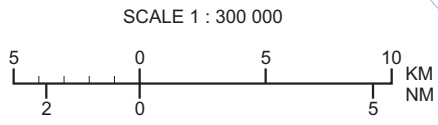
APP 125.250

UŽICE/
Ponikve
RWY 28



VALJEVO
VAL 116.60
441926.0N
0195228.9E
VAL 390
1122R
NOT TO SCALE

5500
113°
6600
289°
MSA 25 NM
UZ NDB/MKR



Change: New chart.

ELEV and ALT in FT
DIST in NM
BRG are MAG

RWY 28 DEPARTURES

<i>SID designator</i>	<i>Lateral</i>	<i>Vertical</i>
KOSIV 1F (KOSIV ONE FOXTROT)	Climb straight ahead. At 3700FT turn LEFT (200 KT IAS MAX) climbing inbound SR L. At SR L turn LEFT (220 KT IAS MAX) heading 337°. Intercept and follow SR QDR 007° climbing to KOSIV.	This SID requires PDG 5.4% until 3700FT. KOSIV at 8000FT or above.
TORTO 1F (TORTO ONE FOXTROT)	Climb straight ahead. At 3700FT turn LEFT (200 KT IAS MAX) climbing inbound SR L. At SR L turn RIGHT (220 KT IAS MAX) heading 180°. Intercept and follow UZ QDR 207° climbing to TORTO.	This SID requires PDG 5.4% until 3700FT. TORTO at 8000FT or above.