

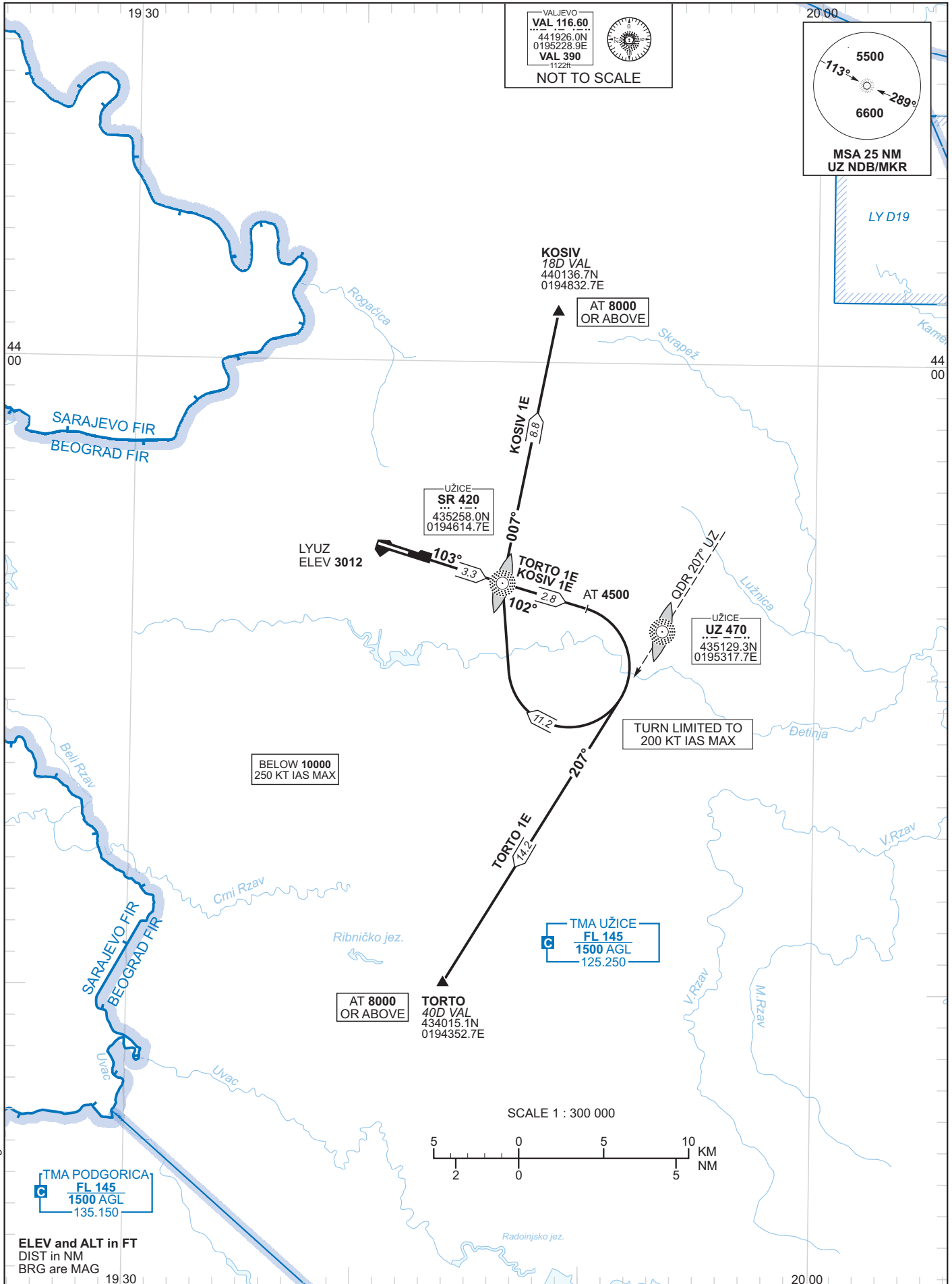
STANDARD DEPARTURE CHART
INSTRUMENT (SID) – ICAO

VAR 4° E (2015)

TRANSITION
ALTITUDE 10000

APP 125.250

UŽICE/
Ponikve
RWY 10



Change: New chart.

ELEV and ALT in FT
DIST in NM
BRG are MAG

RWY 10 DEPARTURES

| <i>SID designator</i> | <i>Lateral</i> | <i>Vertical</i> |
|-------------------------------------|---|--|
| KOSIV 1E (KOSIV ONE ECHO) | Climb straight ahead. At SR L intercept and follow SR QDR 102° to UZ NDB. At 4500FT turn RIGHT (200 KT IAS MAX) inbound SR L. At SR L intercept and follow SR QDR 007° climbing to KOSIV. | This SID requires PDG 4.1% until 4500FT. SR L at 3800FT. KOSIV at 8000FT or above. |
| TORTO 1E (TORTO ONE ECHO) | Climb straight ahead. At SR L intercept and follow SR QDR 102° to UZ NDB. At 4500FT turn RIGHT (200 KT IAS MAX) intercept and follow UZ QDR 207° climbing to TORTO. | This SID requires PDG 4.1% until 8000FT. SR L at 3800FT. TORTO at 8000FT or above. |